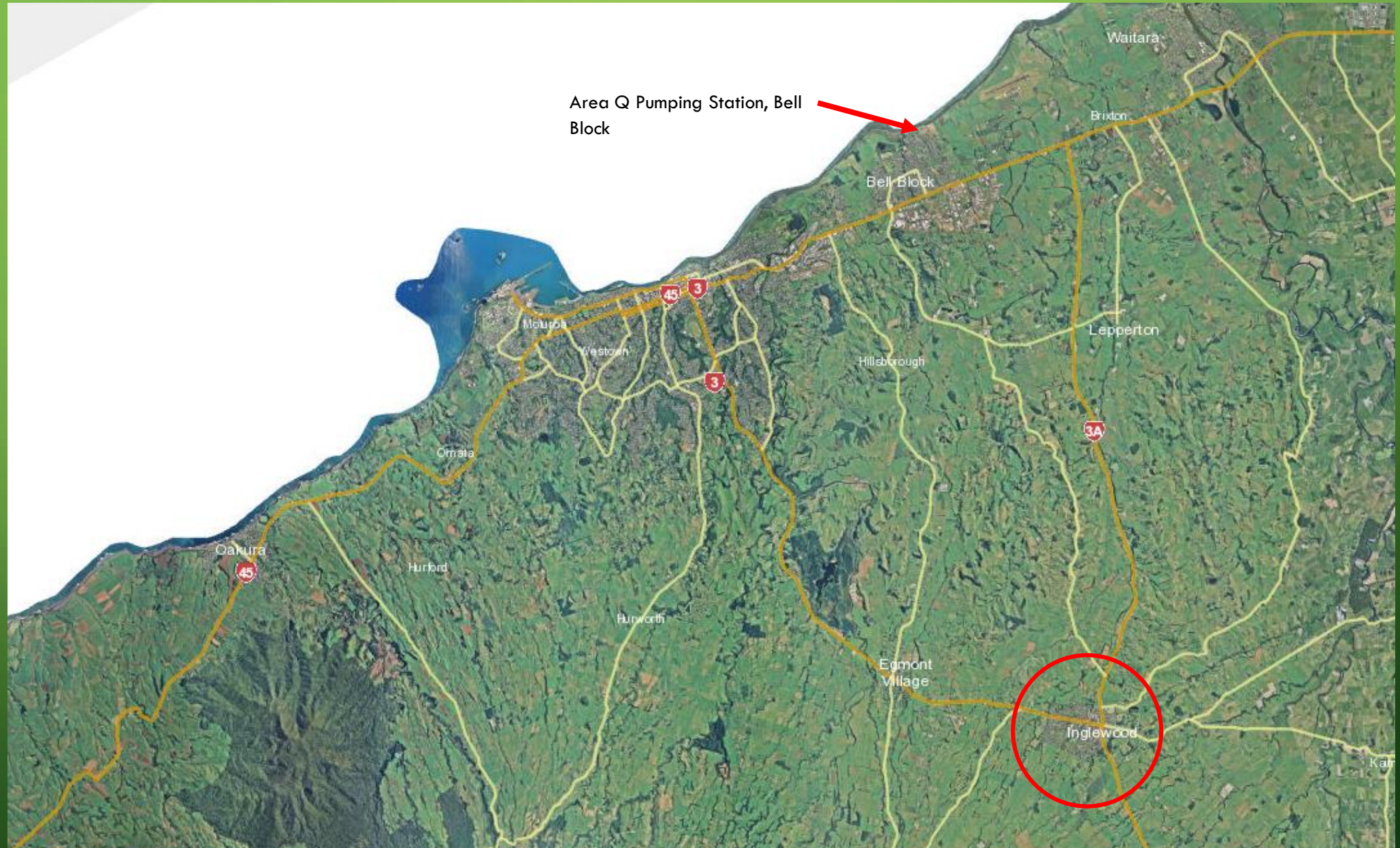


A decorative graphic on the left side of the slide, consisting of a network of thin, light green lines that resemble a circuit board or a stylized tree. These lines are connected to small, hollow green circles at various points, creating a complex, branching pattern that extends from the top to the bottom of the frame.

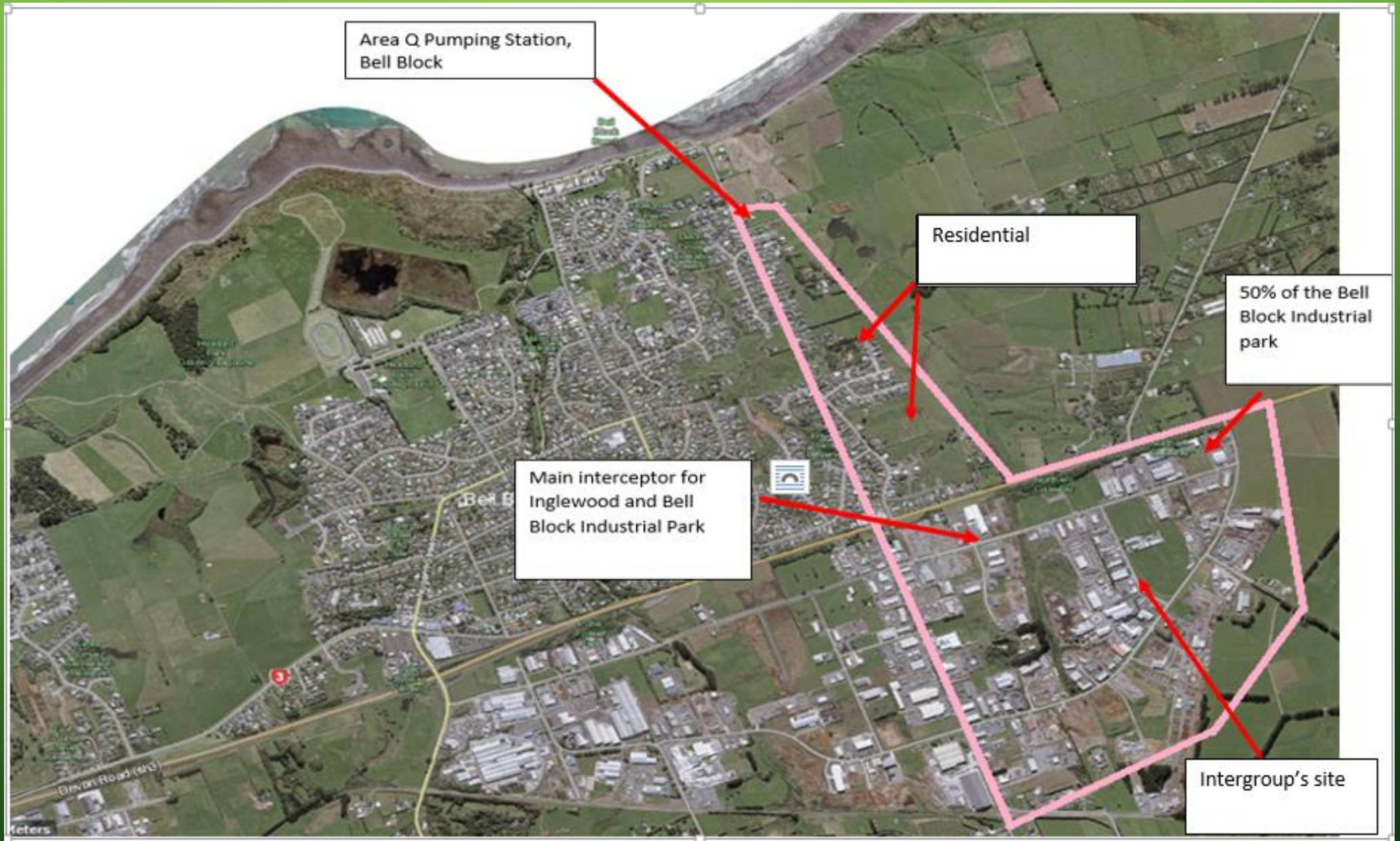
# 2022 INVESTIGATION INTO RANDOM FOAMING EVENTS AT AREA Q PUMPING STATION, BELL BLOCK, NEW PLYMOUTH

# EVENTS AS THEY UNFOLDED

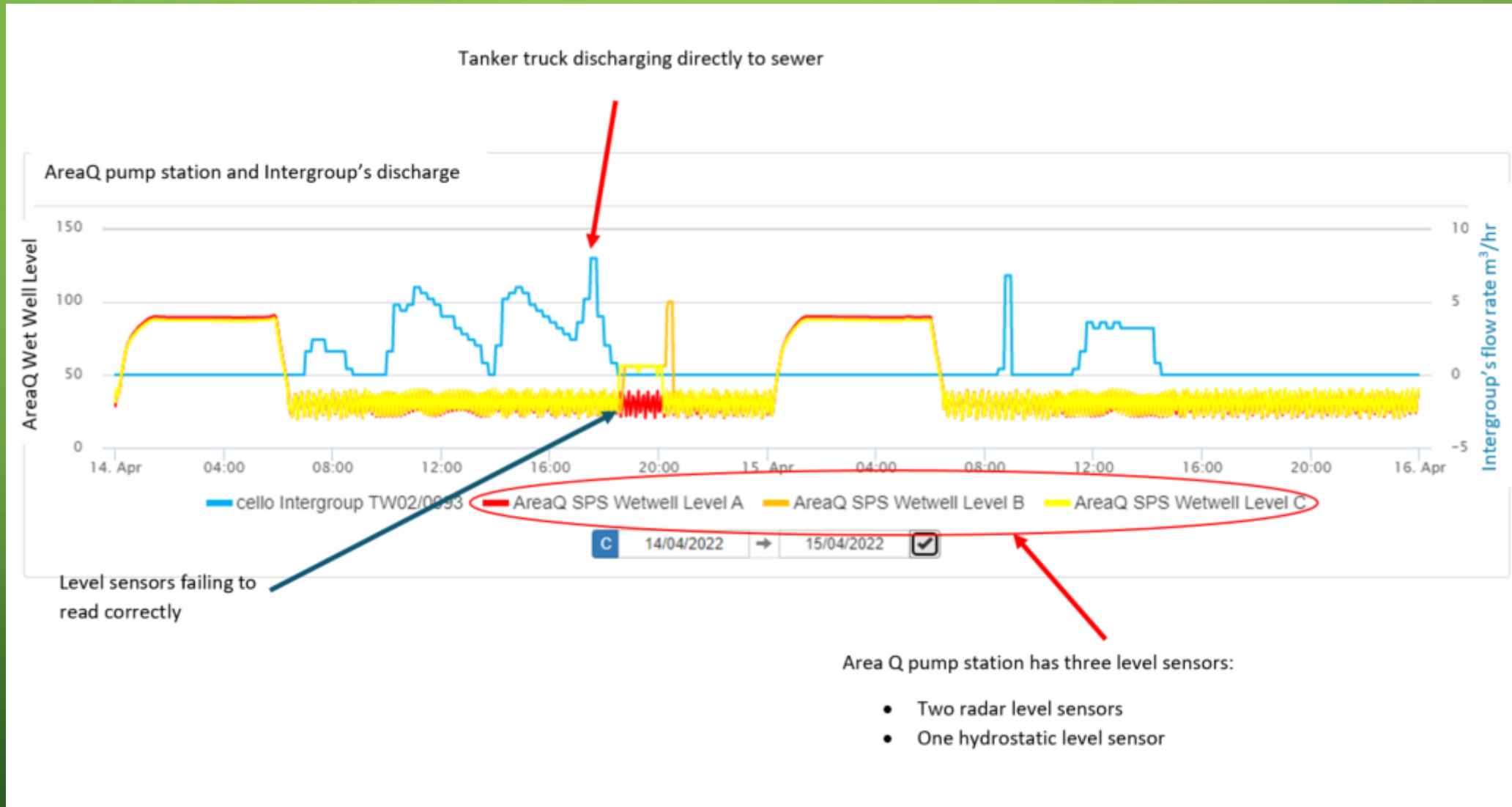




# BELL BLOCK



# INTERGROUP'S FLOW DATA VS AREA Q PS FOAMING





# THE INVESTIGATION OUTCOME

- Rig sites now label the various tanks as Grey water or Black water.
- Intergroup recommenced discharging Black water in their yard to sewer.
- Several days later foaming reappeared at Area Q pump station. Data showed this continued to happen right after Intergroup's Blackwater discharge.
- At this point it was suspected that some other discharge was the cause of the foam and when Intergroup discharged through their system the higher flow combined with the product already in the pipe caused the foaming.

# TARANAKI REGIONAL COUNCIL CALL OUT AT 12:20AM





# LIQUID FERTILISER BLENDING





# WASH PAD AND STORED IBC'S FOR REUSE





# WHAT CAUSED THE FOAMING?







Slot drain bordering the wash pad



Third stage of oil interceptor



# HOW WAS THERE FOAM IN THE SEWER AND ALSO IN THE ENVIRONMENT?



Diversion Gate



Oil Interceptor after diversion gate





IBC's being cleaned and running into the trade waste system